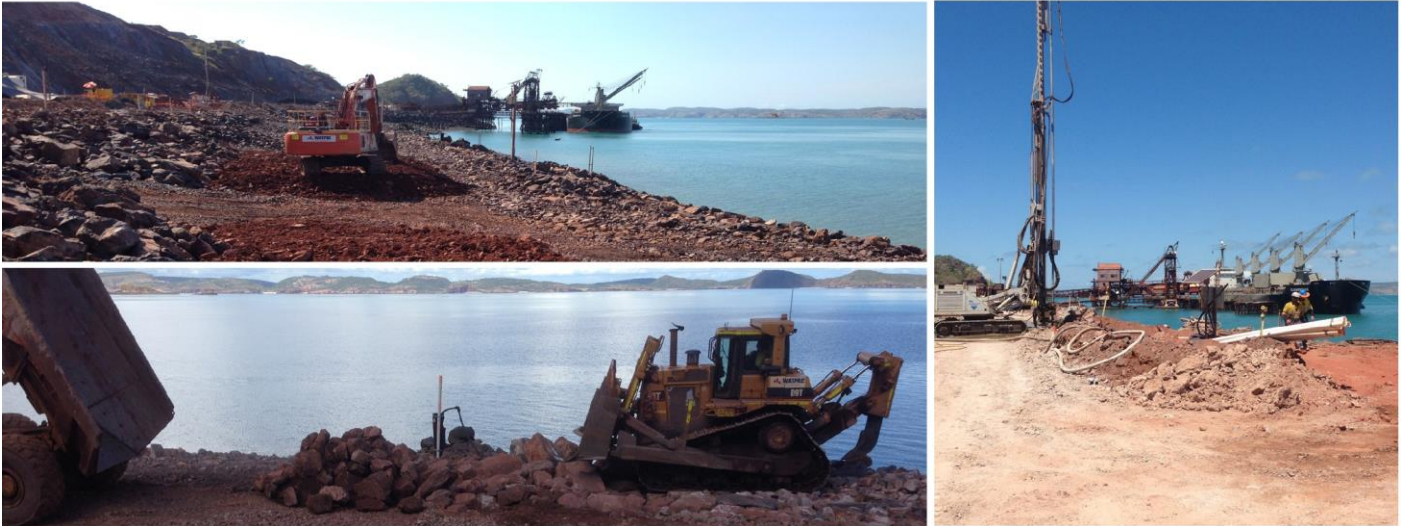


# Cockatoo Island Operations Stage 4 Seawall Construction

Value \$13.3M



Works completed as Watpac Civil & Mining  
**Director's involvement – Pete Hancock – Project Manager**

## FACTS

<b>Client</b>	Pluton Resources Limited	<b>Division</b>	Civil and Mining
<b>Contact</b>	Kobus Potgieter	<b>Market</b>	Dams and Storage Basins
<b>Location</b>	Cockatoo Island, WA	<b>Commenced</b>	August 2013
		<b>Completion</b>	September 2014

## PROJECT OVERVIEW

Pluton Resources undertook sea wall works to enable the expansion of existing mining operations on Cockatoo Island.

Watpac constructed The Stage 4 Sea Wall which comprised approximately 100,000 cubic metres of controlled rock fill and rock armour over a length of 260m. It was constructed partially off shore on unconsolidated sea floor utilising geo-membranes within the foundation and geological monitoring instruments at various depths. A low permeability core of grout installed by both high and low pressure drilling injection methods will provide a barrier against the ingress of the 10m tides experienced at the site.

## SPECIFICATIONS

- 0 56,000m<sup>3</sup> of screened 3A rock fill produced and placed
- 0 53,000m<sup>3</sup> of 3C rock armour produced and placed
- 0 5,000m<sup>2</sup> geo-fabric
- 0 4,200m total grout treatment length over 260 columns